

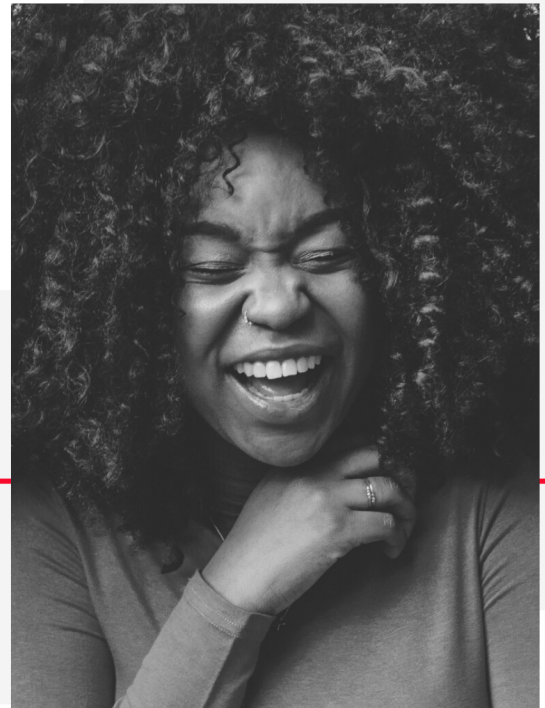


FACING HIV/AIDS *Together*

OKLAHOMA has been hit hard by the HIV/AIDS epidemic. For nearly 25 years, Guiding Right, Inc., has worked to end the epidemic in the state's racial and ethnic minority communities. In 2023, it created a partnership and launched **THRIVE**, a program to prevent and reduce the transmission of HIV/AIDS and substance abuse and misuse in racial and ethnic minorities. **THRIVE** increases access to prevention and treatment services and addresses behavioral health disparities among at-risk populations.

Health Services Provided

Therapy
Substance Abuse Treatment
Health System Navigation
Community Outreach
Education



TREATMENT
& REFERRALS

THRIVE

INTERVENTION
& EDUCATION

- ★ Lawton ★
- ★ Oklahoma City ★
- ★ Tulsa ★



THRIVE (Treatment, Referrals, InterVentions, and Education) is a program to prevent and reduce substance abuse/misuse and transmission of HIV/AIDS among racial/ethnic minorities at increased risk for HIV/AIDS.

Funding for this project provided by the Substance Abuse and Mental Health Services Administration, Minority AIDS Initiative.

Embrace Life

CONTACT US



(405) 733-0771



lwilson@guidingright.org / tbraxton@guidingright.org



www.guidingright/thrive

TREATMENT
& REFERRALS

THRIVE

INTERVENTION
& EDUCATION

African American men and women face the most severe burden of HIV and AIDS in Oklahoma. **THRIVE** is Guiding Right's newest program to address this health disparity.



Disproportionately Burdened

African Americans are disproportionately burdened by HIV and AIDS. According to the Oklahoma State Department of Health, Blacks in Oklahoma had the highest rate of newly diagnosed HIV cases in 2016 (26.4 cases per 100,000 population) among all the racial and ethnic groups in Oklahoma (OSDH, 2016).

Highest Rate of Newly Diagnosed HIV Cases



According to the Oklahoma State Department of Health, Blacks in Oklahoma had the highest rate of newly diagnosed HIV cases in 2016 (26.4 cases per 100,000 population) among all the racial and ethnic groups in Oklahoma (OSDH, 2016).

Black Females

Black females experienced a 24% increase in HIV rates in 2017 (OSDH, 2017)



HIV and Comorbidities

The underlying comorbid conditions that often accompany HIV places an increased pressure to assure that individuals with HIV receive needed medical care and treatment.



CONTACT US



(405) 733-0771



lwilson@guidingright.org / tbraxton@guidingright.org



www.guidingright/thrive